

F.R.L.
F.R.
F (Filtr)
R (Reg)
L (Lub)
Drain
Separ
Mech
Press SW
Res press
exh valve
SlowStart
Anti-bac/Bac-
remove Filt
Film
Resist FR
Oil-ProhR
Med
Press FR
No Cu/
PTFE FRL
Outdrs FRL
Adapter
Joiner
Press
Gauge
CompFRL
LgFRL
PrecsR
VacF/R
Clean FR
ElecPneR
AirBoost
Speed Ctrl
Silncr
CheckV/
other
Fit/Tube
Nozzle
Air Unit
PrecsCompn
Electro
Press SW
ContactSW
AirSens
PresSW
Cool
Air Flo
Sens/Ctrl
WaterRtSens
TotAirSys
(Total Air)
TotAirSys
(Gamma)
Gas
generator
RefrDry
DesicDry
HiPolymDry
MainFiltr
Dischrg
etc
Ending

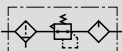


F.R.L. combination: copper and PTFE-free C1000/C2500/C3000 C4000/C6500/C8000-W-P6 Series

Copper ion prevention treatment

● Port size: 1/8 to 1

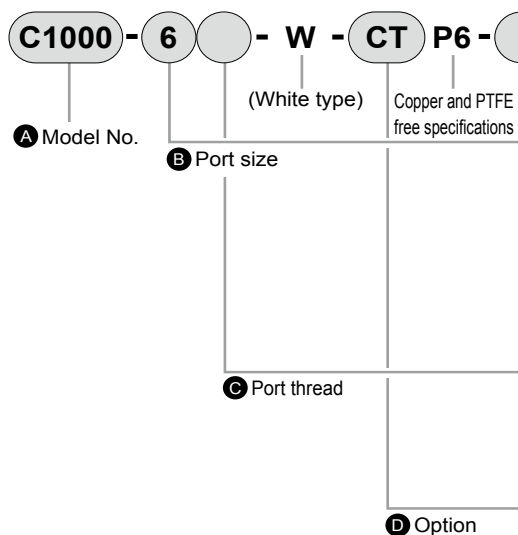
JIS symbol



RoHS

CAD

How to order



* Refer to page 30 for the explanation of the option.

G Residual pressure exhaust valve (included)

F Pipe adaptor set (included)

A Model No.					
C1000	C2500	C3000	C4000	C6500	C8000

Code	Description	C1000	C2500	C3000	C4000	C6500	C8000
B Port size							
6	1/8	●					
8	1/4	●	●	●	●		
10	3/8		●	●	●		
15	1/2				●		
20	3/4					●	●
25	1					●	●

C Port thread							
Blank	Rc thread	●	●	●	●	●	●
N	NPT thread	●	●	●	●	●	●
G	G thread	●	●	●	●	●	●

D Option							
Drain discharge	Blank	Filter with manual drain cock, lubricator without manual cock	●	●	●	●	●
	C	Lubricator with manual cock	●	●	●	●	●
Bowl material	Blank	Polycarbonate bowl	●	●	●	●	●
	Z	Nylon bowl	●	●	●	●	●
Element	Blank	5 μm	●	●	●	●	●
	Y	0.3 μm (submicron)		●	●	●	●
Diff press detect	Blank	Without differential pressure detection port	●	●	●	●	●
	Q	With differential pressure detection port (Rc 1/4)				●	●
Pressure range	Blank	0.05 to 0.85 MPa	●	●	●	●	●
	L	0.05 to 0.35 MPa	●	●	●	●	●
Pressure relief	Blank	With relief mechanism	●	●	●	●	●
	N	Non-relief	●	●	●	●	●
Pressure gauge	T	No pressure gauge (gauge port (1/4) is assembled sealed)	●	●	●	●	●
	T6	Pressure gauge ready (gauge port (Rc 1/8) is left open) *6	●	●	●	●	●
	T8	Pressure gauge ready (gauge port (1/4) is left open) *6	●	●	●	●	●
Flow direction	Blank	Standard flow (left → right)	●	●	●	●	●
	X1	Reverse flow (right → left)	●	●	●	●	●

E Display unit							
Blank	MPa display (Rc thread), psi display (NPT thread), bar display (G thread)	●	●	●	●	●	●
J1	MPa display (NPT, G thread)	●	●	●	●	●	●

F Pipe adaptor set (included)							
Blank	Not included	●	●	●	●	●	●
A6*W	1/8 pipe adaptor set	●					
A8*W	1/4 pipe adaptor set	●	●	●	●		
A10*W	3/8 pipe adaptor set	●	●	●	●		
A15*W	1/2 pipe adaptor set		●	●	●		
A20*W	3/4 pipe adaptor set				●	●	●
A25*W	1 pipe adaptor set					●	●
A32*W	1 1/4 pipe adaptor set					●	●

* Adaptor thread							
Blank	Rc thread	●	●	●	●	●	●
N	NPT thread	●	●	●	●	●	●
G	G thread	●	●	●	●	●	●

G Residual pressure exhaust valve (included)							
Blank	Not included	●	●	●	●	●	●
VW	Residual pressure exhaust valve (V3000-W) + joiner set		●	●	●		

⚠ Precautions for model No. selection

- *1 : Refer to pages 34 to 41 for specifications, dimensions and flow characteristics.
- *2 : G and NPT threads are available for IN, OUT, gauge port and drain outlet, including the attachment V.
- *3 : Select options for the drainage, bowl material, element, differential pressure detection and regulator. When selecting options for several items, list options in order from the top.
Select one of the regulator options.
- *4 : The joiner set is enclosed with the pipe adaptor set.
- *5 : Combinations other than those above are used as customized combinations (page 82).
- *6 : The pressure gauge must be prepared separately.
T6:G49D-6-P10-P6(L:G49D-6-P04-P6)
T8:G59D-8-P10-P6(L:G59D-8-P04-P6)